



Golding delivers safe, flexible and cost-effective project solutions in urban, regional and remote locations for the resources, utilities, property and transport sectors.

Since its establishment in 1942, Golding has grown into one of the largest civil infrastructure, urban development and mining contractors in Queensland. Ongoing success over the past 80 years has allowed Golding to expand its capabilities into New South Wales.

## Delivering certainty and value

The capability of our people, assets and business systems underpin every aspect of what we do. Golding provide reliable quality resources to deliver optimal value for money solutions for our clients.

Golding has a deserved reputation for reliably launching, delivering and closing projects. We work dependably to deliver projects required timeframe for the agreed price while ensuring excellence in quality, safety, environmental and community performance.

Golding delivers superior value. We take a considered, practical and disciplined approach that eliminates rework and waste. We encourage visibility in relation to cost and create ways to embed savings and improve productivity on all projects.

Golding has consistently demonstrated its ability to adapt to achieve exceptional results for our clients. We achieve success under varied contract delivery methods, including construct-only, design and construct, early contractor involvement, alliances and joint ventures.

## CIVIL



Civil construction solutions have formed a core part of Golding's business for over seven decades. From roads and rail to bridges and ports, Golding's clients can rely on our bulk earthworks and infrastructure development capability. Our expertise has been employed to build a diverse range of projects from power stations, processing plants, wharves and jetties to industrial subdivisions.

We successfully deliver complex civil projects in challenging traffic, climatic, marine and land-based environments, in urban, remote and regional areas of Queensland and New South Wales. Our clients include major mining houses, energy companies and EPCs, government, and infrastructure investors.

Our experience in this area has informed the continuous improvement of our methodologies, equipment, systems and management approaches to deliver complex projects dependably.

## URBAN



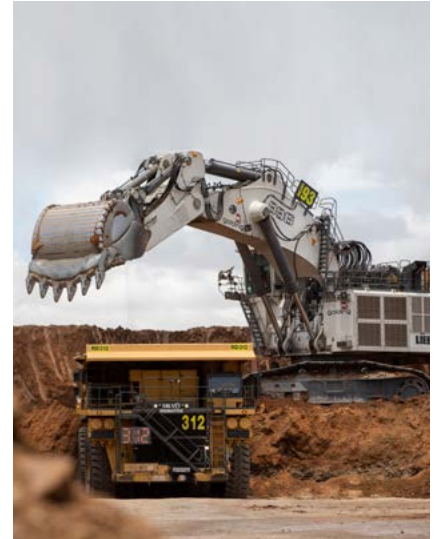
Highly regarded residential, industrial and commercial property developers rely on Golding's specialist urban development services – from complex earthworks, drainage and roads, to large scale energy and water infrastructure.

With a focus on productivity, Golding has demonstrated time and again its capability to deliver projects on time, to budget, safely, consistently and with positive environmental and community outcomes.

Golding has an experienced team that works collaboratively with consultants, councils and developers. We provide technical input to achieve integrated design and build solutions to engineering challenges.

We continually seek value for money solutions, drawing on well-established supply chains and often running activities concurrently to create resource efficiencies and savings.

## MINING



Golding delivers a full range of open cut mining services in the coal and metalliferous mining sectors, spanning the entire mine development and operations.

We offer a comprehensive, expert service from construction of mine-site infrastructure and removal of overburden and topsoil to open cut mining on both short and long-term contracts.

Golding also offers specialist mine site rehabilitation works including environmental dam construction and reclamation earthworks.

Golding has developed a customised IT system to support our mining operations. This enables us to plan mining activities, optimise circuit performance, and make management decisions during a shift to optimise resource utilisation and productivity, and provide exceptional value for money.

## ASSURING QUALITY

Golding's reputation is built on our ability to deliver products and services that unflinchingly satisfy the needs and expectations of our clients.

Our quality management systems encompass all levels of our business operations and maintain accreditation to international quality standards. Our quality assurance processes reinforce our commitment to achieving consistent and cost-effective business operations.

These processes are applied to our workplaces through site-specific quality plans that are tailored to meet client, employee and local community requirements.

## WORKING SAFELY

No job is too important to risk the safety and health of our people to achieve it. Achieving 'zero harm' isn't about compliance – it's the way we do business.

Our systems are built on visible safety leadership, an unwavering discipline in applying safe work practices, and employees who do not take risks or accept risk-taking in workmates.

We have systems in place that require our people to stop and take positive action when a new hazard is identified. If incidents do occur, we make sure they are properly investigated, and our systems are improved to prevent reoccurrence while sharing lessons learnt across all our operations.



## RESPECTING OUR ENVIRONMENT

At Golding, we understand the importance of respecting our environment and remaining environmentally accountable throughout our operations. Protecting the environment and supporting sustainable development is central to the success of our business, and we remain vigilant in minimising our environmental impacts. We consult with the community on projects in environmentally sensitive areas and strive to conserve resources and manage our environmental footprint.

All Golding projects and sites comply with an Environmental Management System that is certified to the internationally recognised environmental standard of ISO14001. Our site-specific environmental management plans guide our operations to ensure all work is conducted within statutory and community environmental requirements.